

**38th ANNUAL SHANE BROCK MEMORIAL TRACK MEET**  
**MAY 6, 2017**  
**LANDER VALLEY HIGH SCHOOL**

- Entry Fee:** \$100.00 for each school (boys and girls combined)
- Entries:** Entries need to be made on Runnercard.com.  
Please enter times/distance for your athletes.  
Maximum of four events per athlete. Teams will be allowed to enter up to six athletes per event, and up to two relay teams.
- Entries will close at 7:30 a.m. on Saturday, May 6.
- Scratches:** Should be made Saturday morning prior to leaving your school on runnercard. Last minute scratches can be made at the event check-in. No additions will be allowed.
- Dressing Facilities:** The locker rooms will be open. Girls is located on the north side of Fieldhouse; boys is located on the south side of Fieldhouse.
- Equipment:** Shots and discs must be weighed and approved before they can be used for competition. This can be done between 8:00 – 8:45 in the track shed north of the grandstands. We will weigh each pole vaulter between 8:00 – 8:45 in the track shed.
- Rules:** NFHS rules will apply. This is a WHSAA qualifying meet.
- Track events:** Finals in the 110H, 100H, 100 & 200 dash. The remaining running events will all be timed finals. FAT timing system will be used.

**Throws/jumps:** Throwers and jumpers will be allowed three tries. Top nine to finals for three more tries. Attempts that do not clear the minimum throw line will not be measured.

Minimum throw lines:

Boys Disc: 90 feet

Girls Disc: 70 feet

Boys Shot: 35 feet

Girls Shot: 25 feet

**Hospitality:** In auxiliary gym. For meet officials, bus drivers and coaches only.

**Packets:** Packets can be picked up in the press box. Packets include order of events, WHSAA qualifying form, invoice for entry fees and trash bag for camp cleanup.

**Parking/Team Camps:** See the attached diagram for areas for bus parking and team camps.

**Awards:** Medals for 1st-3rd places; ribbons for 4th-6th

**Contacts:** Ben Gose,  
[bgose@landerschools.org](mailto:bgose@landerschools.org)

Serol Stauffenberg,  
[sstauffenberg@landerschools.org](mailto:sstauffenberg@landerschools.org)

**SHANE BROCK INVITATIONAL TRACK MEET  
MAY 6, 2017  
LANDER VALLEY HIGH SCHOOL**

**ORDER OF EVENTS**

FIELD EVENTS

- 9:00 a.m.**    **Girls:** High Jump, Discus, Long Jump  
                  **Boys:** High Jump, Long Jump, Shot Put, Pole Vault
- 1:00 p.m.**    **Girls:** Shot Put, Triple Jump, Pole Vault  
                  **Boys:** Triple Jump, Discus

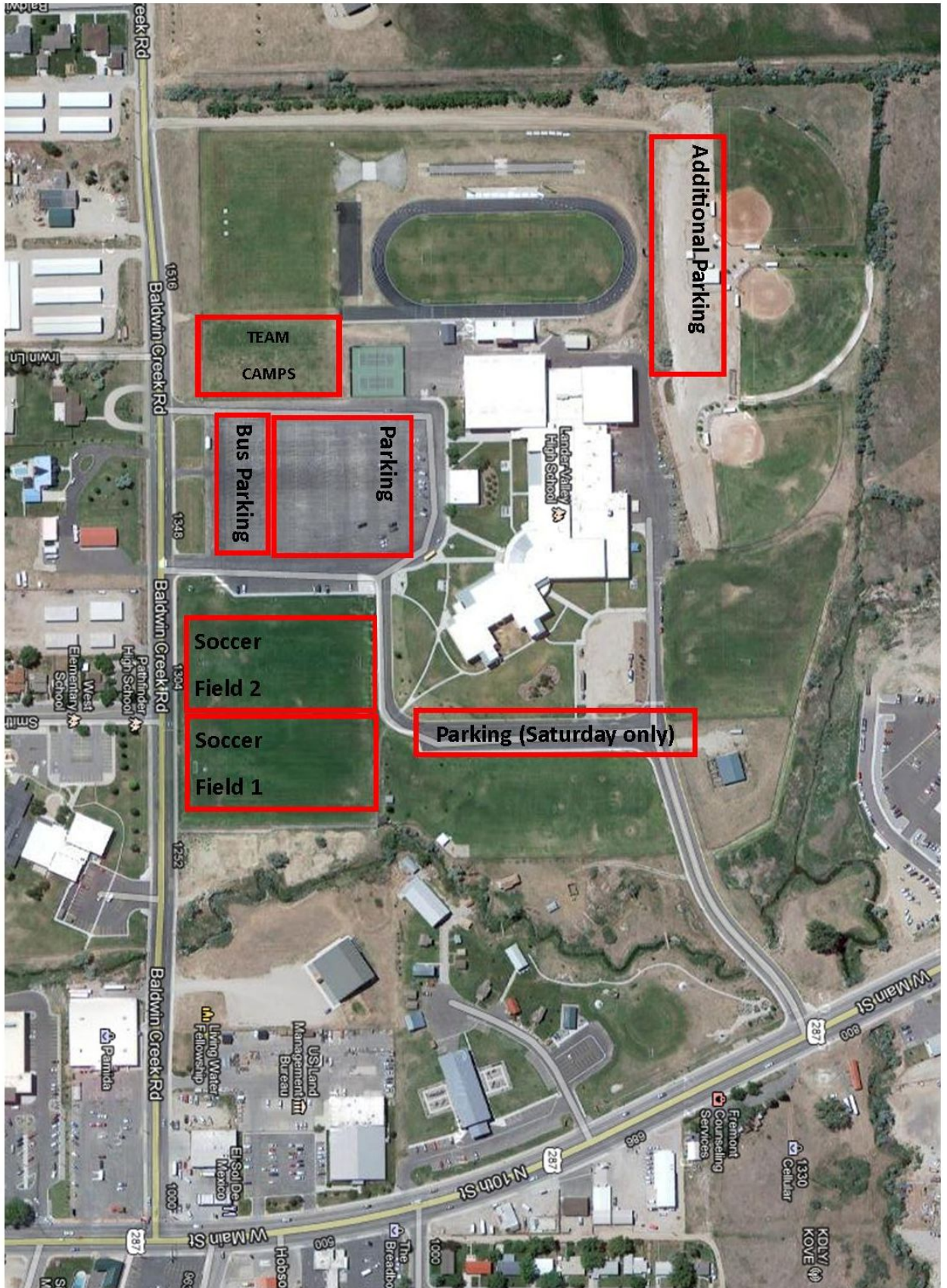
TRACK EVENTS

Order: Varsity girls, Varsity boys.

- 10:30** a.m.    3200m Relay  
                  100 Int. Hurdles (prelims)  
                  110 High Hurdles (prelims)  
                  100m (prelims)  
                  200m (prelims)

**30 min lunch break after prelims. Recognition of senior Lander athletes.**

- 100 Int. Hurdles (finals)  
110 High Hurdles (finals)  
100m (Finals)  
1600m Run  
400m Relay  
400m Dash  
300m Hurdles  
800m Run  
200m (finals)  
3200m Run  
1600m Relay



Additional Parking

TEAM  
CAMPS

Bus Parking  
Parking

Soccer  
Field 2  
Soccer  
Field 1

Parking (Saturday only)

Baldwin Creek Rd

1518  
Baldwin Creek Rd

1348  
Baldwin Creek Rd

1304  
Baldwin Creek Rd

1252  
Baldwin Creek Rd

Baldwin Creek Rd

287

Main St

N 10th St

Main St

287

KOLBY KOVE

Baldwin Creek Rd

Twin Ln

Pathfinder High School  
West Elementary School

Parrida

Hobson

The Breadbox

1000

500

500

500

500

500

500

500

500

500

500

500

500

500

500

500

500

500

500

500

500

500

500

500

500

500

500

500

500

500

500

500

500

500

500

500

Baldwin Creek Rd

Twin Ln

Pathfinder High School  
West Elementary School

Parrida

Hobson

The Breadbox

1000

500

500

500

500

500

500

500

500

500

500

500

500

500

500

500

500

500

500

500

500

500

500

500

500

500

500

500

500

500

500

500

500

500

500

500

Baldwin Creek Rd

Twin Ln

Pathfinder High School  
West Elementary School

Parrida

Hobson

The Breadbox

1000

500

500

500

500

500

500

500

500

500

500

500

500

500

500

500

500

500

500

500

500

500

500

500

500

500

500

500

500

500

500

500

500

500

500

500

Baldwin Creek Rd

Twin Ln

Pathfinder High School  
West Elementary School

Parrida

Hobson

The Breadbox

1000

500

500

500

500

500

500

500

500

500

500

500

500

500

500

500

500

500

500

500

500

500

500

500

500

500

500

500

500

500

500

500

500

500

500

500

Baldwin Creek Rd

Twin Ln

Pathfinder High School  
West Elementary School

Parrida

Hobson

The Breadbox

1000

500

500

500

500

500

500

500

500

500

500

500

500

500

500

500

500

500

500

500

500

500

500

500

500

500

500

500

500

500

500

500

500

500

500

500

Baldwin Creek Rd

Twin Ln

Pathfinder High School  
West Elementary School

Parrida

Hobson

The Breadbox

1000

500

500

500

500

500

500

500

500

500

500

500

500

500

500

500

500

500

500

500

500

500

500

500

500

500

500

500

500

500

500

500

500

500

500

500

Baldwin Creek Rd

Twin Ln

Pathfinder High School  
West Elementary School

Parrida

Hobson

The Breadbox

1000

500

500

500

500

500

500

500

500

500

500

500

500

500

500

500

500

500

500

500

500

500

500

500

500

500

500

500

500

500

500

500

500

500

500

500

Baldwin Creek Rd

Twin Ln

Pathfinder High School  
West Elementary School

Parrida

Hobson

The Breadbox

1000

500

500

500

500

500

500

500

500

500

500

500