



THE DISTRICT ATHLETICS

2024 YISD Parkland Middle School Cross Country Meet

Coaches,

Welcome to the 2024 Parkland Middle School Cross Country Meet. Below you will find information you will need for our meet that will be held Saturday, August 31st.

We will be using Runnercard.com to register all entries. If you are not familiar with Runnercard.com please create your account in advance to avoid missing our deadline. Creating an account is free. *Please register your team by Wednesday, August 28th by 8:00 PM.* Please enter all athletes that may compete.

Meet Location: Veterans Park. 5301 Salem Dr, El Paso, TX 79924.

Course: The course will consist of grass fields, dirt pathways, and concrete. We anticipate having some mosquitos present Saturday morning so advise your athletes to bring mosquito repellent.

Start Time: The meet will start at 8:00 AM. The following will be the order of events: 8th Girls will start at 8:00, 8th Boys will start at 8:30, 7th Girls at 9:00, and 7th Boys at 9:30. Races will start every thirty minutes. If you have runners out on the two mile course after thirty minutes, please have them step off the course to avoid collisions with runners beginning their race.

Schools: Alicia Chacon, Bel Air, Del Valle, Eastwood Knolls, Eastwood, Garcia Enriquez, Hanks, Immanuel, Parkland, Riverside, Ysleta, YWLA.

Awards: Medals will be awarded to the top 10 runners in each race.

Results: Official results will be posted on Runnercard.com.

Team Dropoff/Bus Parking: Buses may park outside of the. Please exchange numbers with your bus driver so they know when to pick your team up.

Spectator Parking: Spectators may park outside and inside the park.

Water: Athletes and teams are required to bring their own water supply.



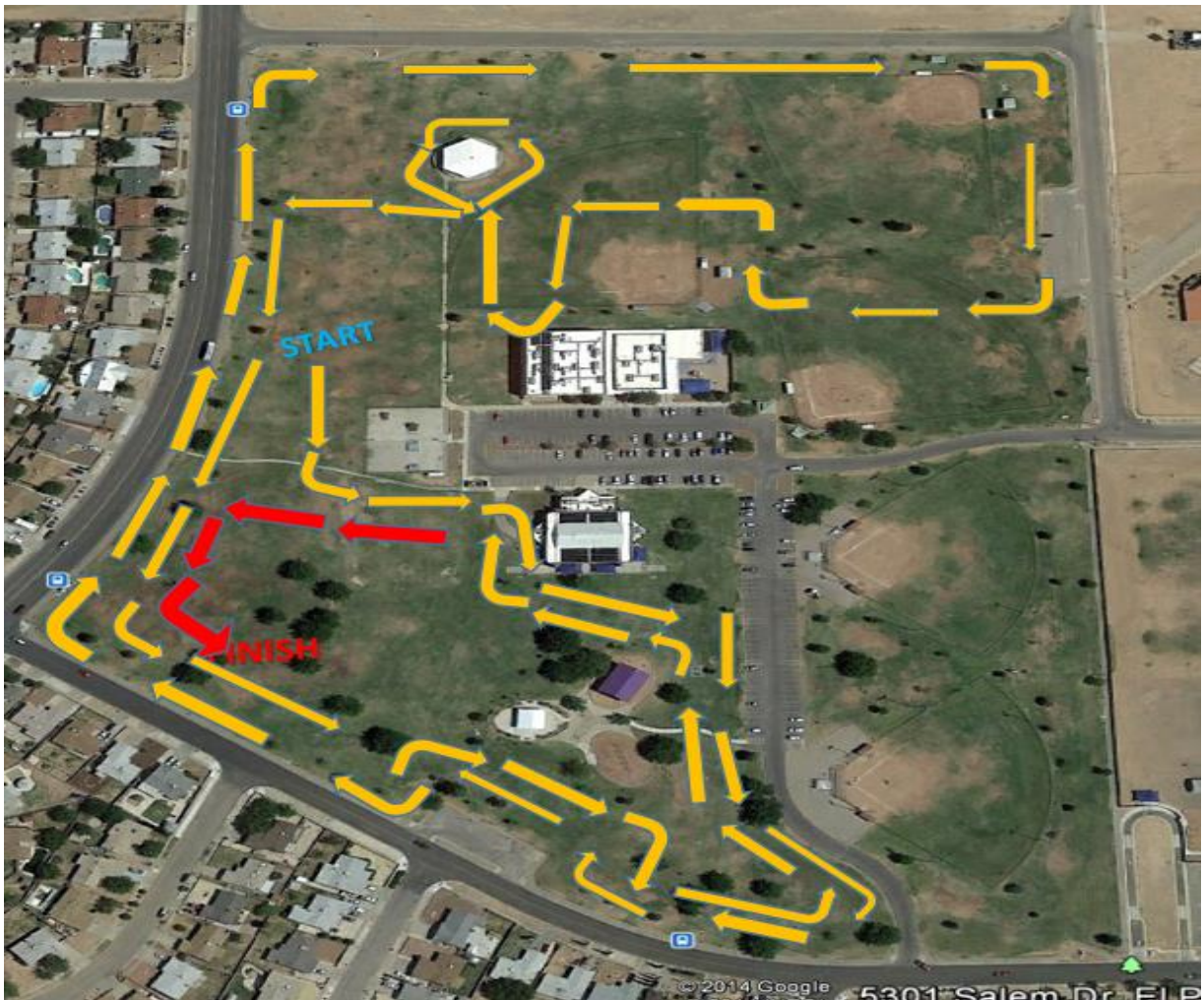
THE DISTRICT

ATHLETICS

Team Camps: Teams can set up camp under the trees as long as the camp location does not interfere with the course.

Restrooms: PortaPotties will be on site for restroom needs. Veteran Park Pool will be closed to individuals who need to use the restroom.

Course Map:



- Red Arrows indicate direction to the finish